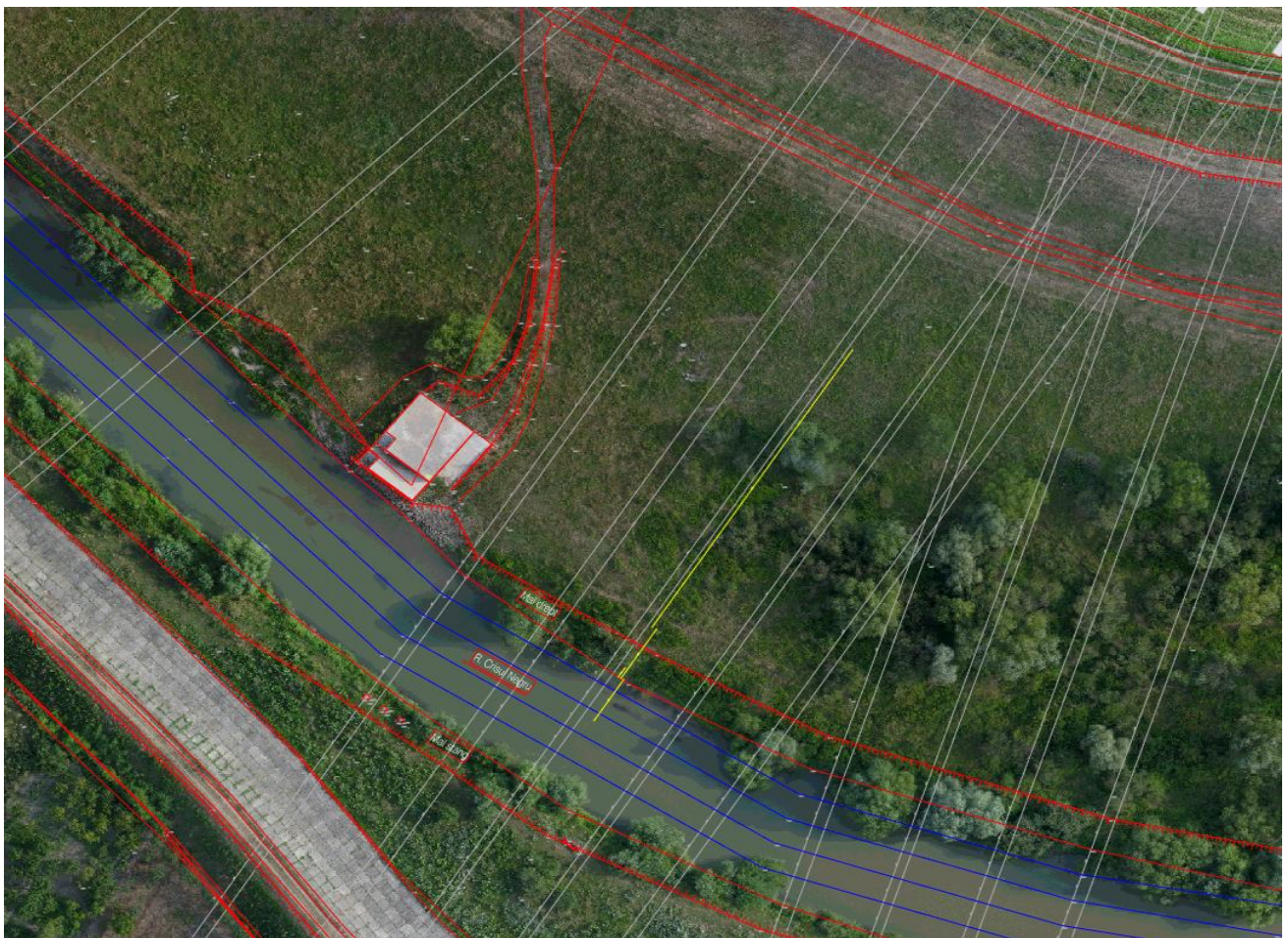


Crișul Negru river section at Zerind, Arad county
(46° 37'35.55817"N 21° 31'11.25372"E)



Proposed situation plan



Composed of:

- Crushed stone road for easier access from to dike to the litter trap;
- Reinforced concrete tank that supplements the volume of the collection box of the Litter Trap system ;
- Reinforced concrete platform that will ensure the maneuvering space of the machines during the collection of floats, loading and unloading the container and handling the loading machine;
- Litter Trap system which consists of a floating collecting box made of recycled plastic, fixed on pillars and two arms for diverting the floats to the collecting box.

