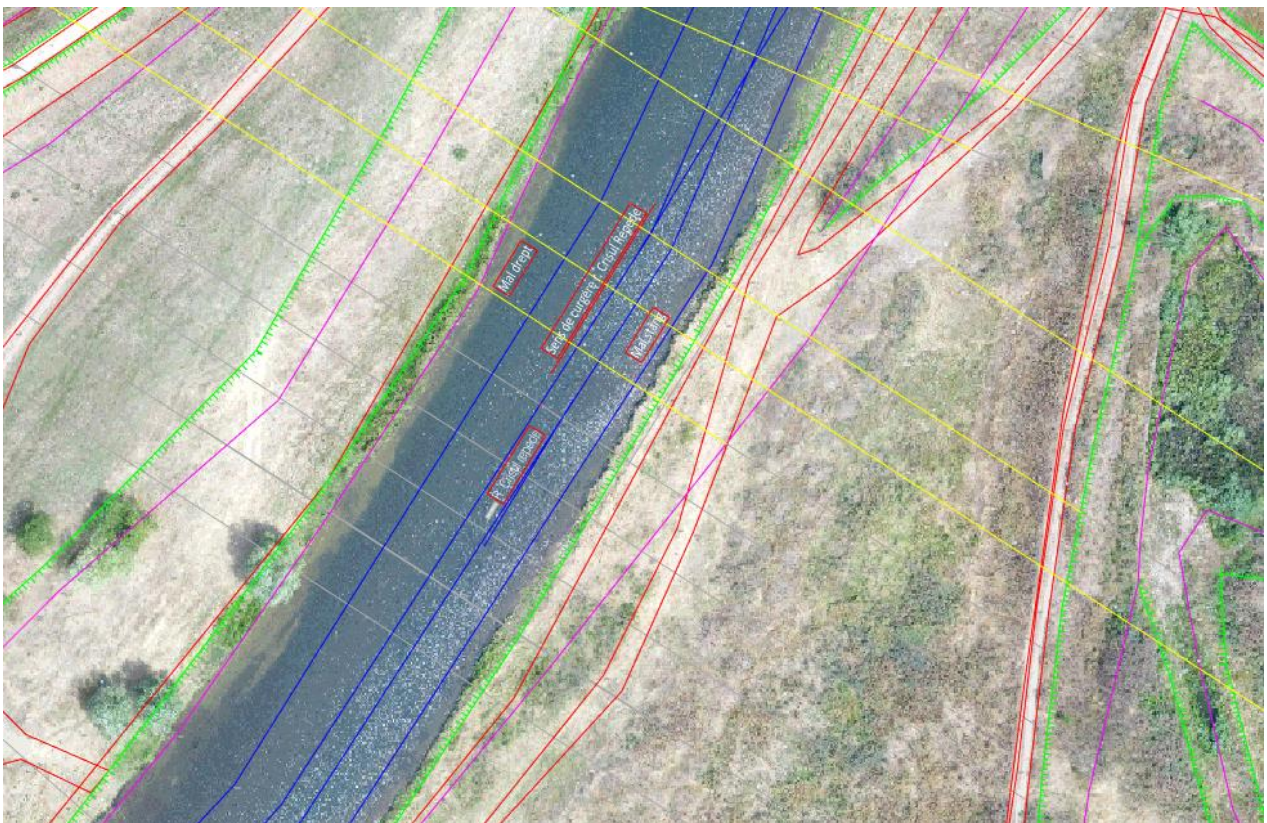
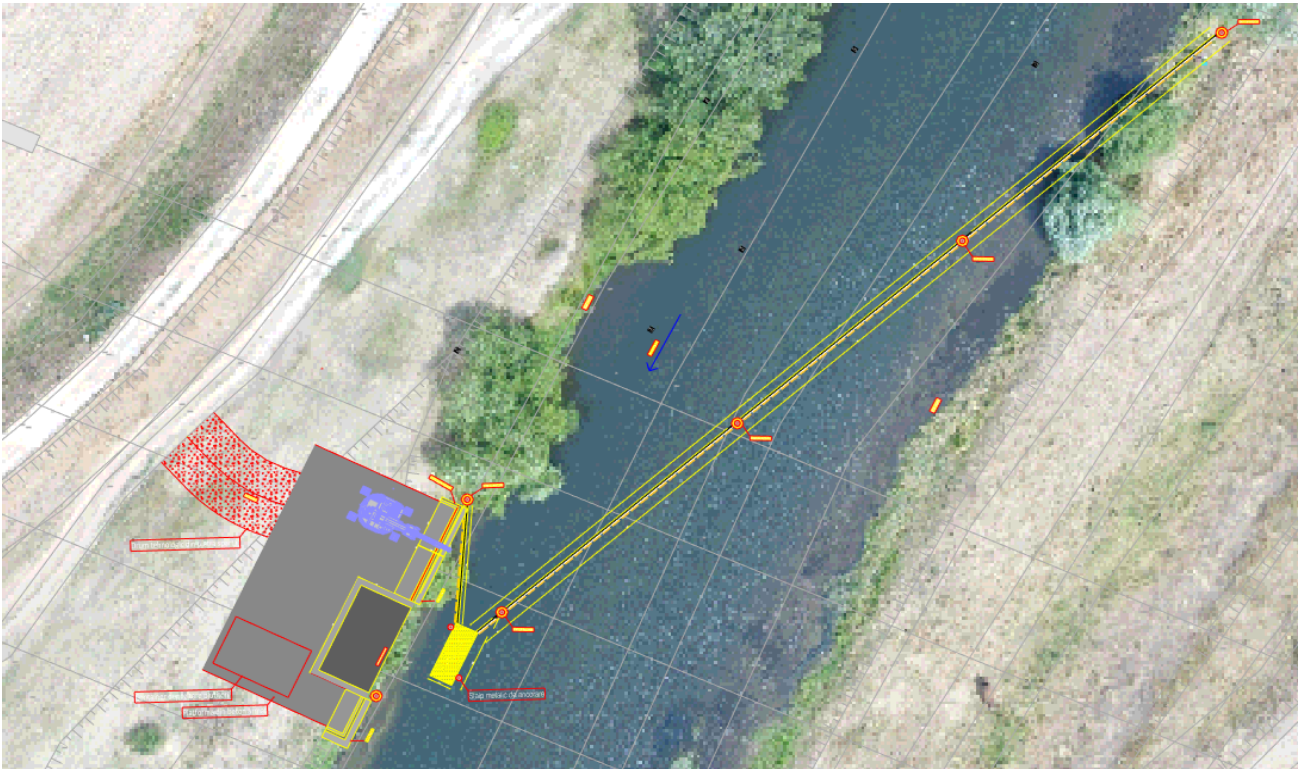


Crișul Repede river section at Girișu de Criș, Bihor county  
(47° 04'23.71501"N 21° 45'15.64248"E)



## Proposed situation plan



### Composed of:

- Crushed stone road for easier access from to dike to the litter trap;
- Reinforced concrete tank that supplements the volume of the collection box of the Litter Trap system;
- Reinforced concrete platform that will ensure the maneuvering space of the machines during the collection of floats, loading and unloading the container and handling the loading machine;
- Litter Trap system which consists of a floating collecting box made of recycled plastic, fixed on pillars and two arms for diverting the floats to the collecting box.

